

Candidate Recruitment in Canadian Political Parties

William Cross, Carleton University
Lisa Young, University of Calgary

Parties & Candidate Selection

- ▶ Recruitment: core function of parties
- ▶ Canada: local-national trade-off
- ▶ Evidence of centralization, perhaps declining role for parties in recruitment

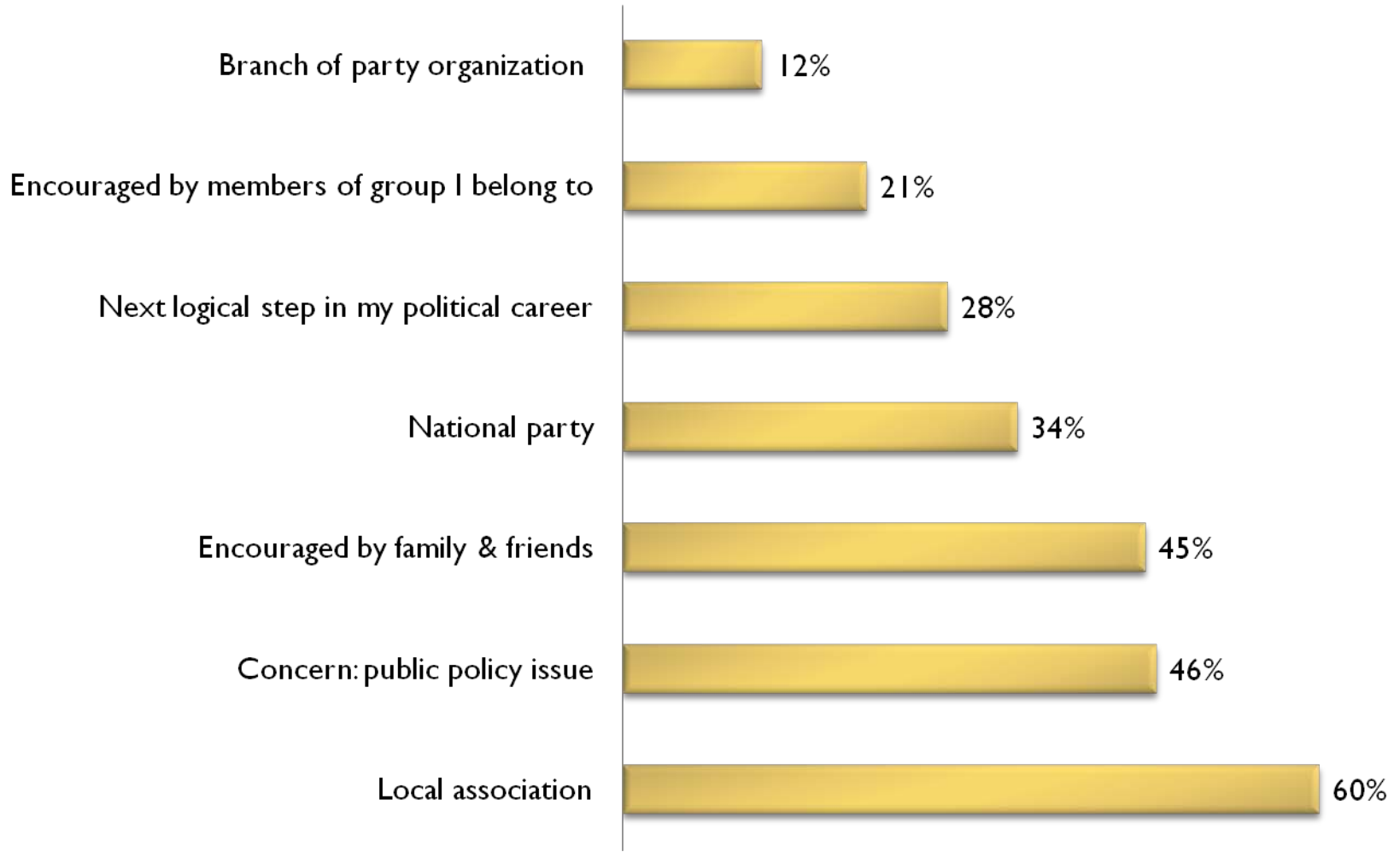


Survey of Liberal & NDP Candidates, 2008 Federal Election

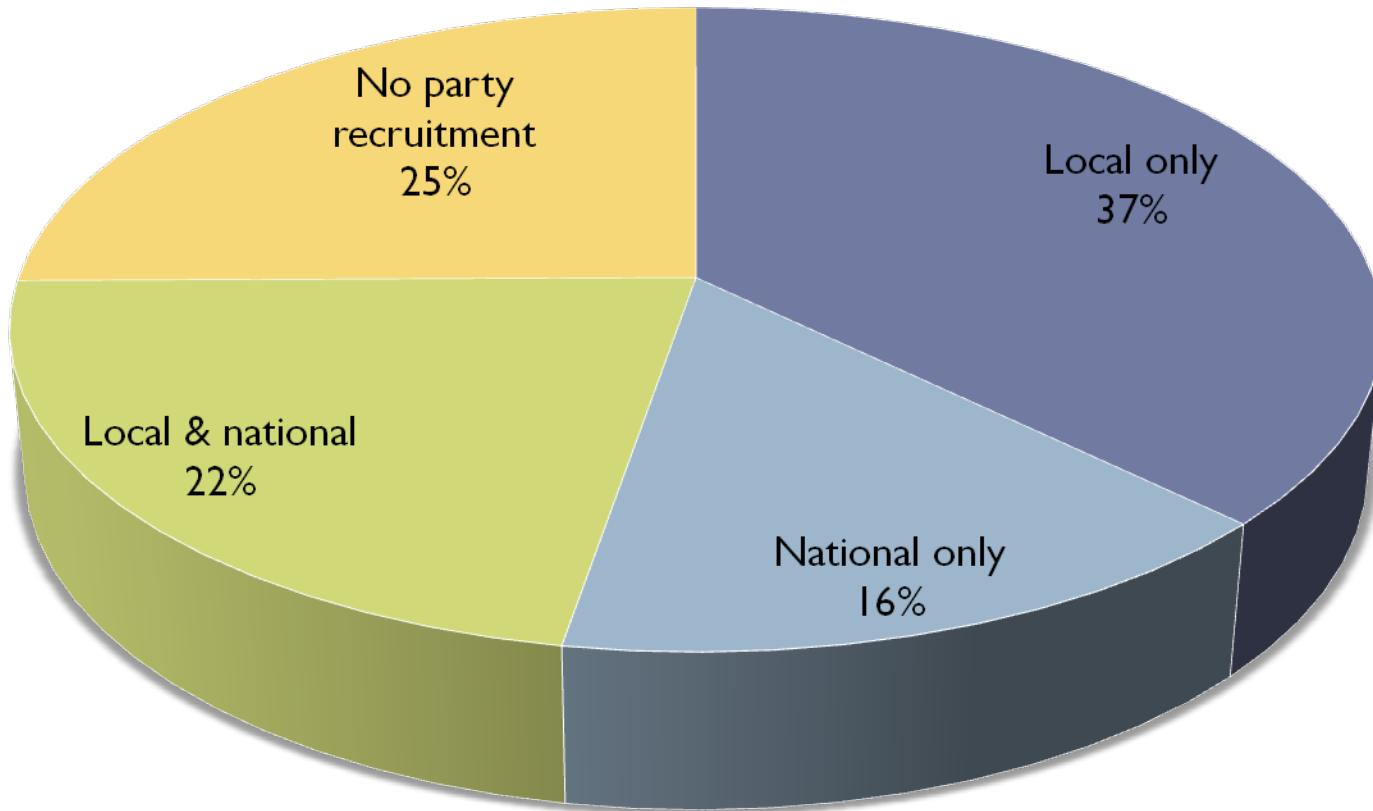
- ▶ Post-election survey
- ▶ N=170 NDP and 168 Liberal
- ▶ Response rate=55%
- ▶ MPs=19% of respondents



Factors affecting decision to run for nomination



Candidate Recruitment

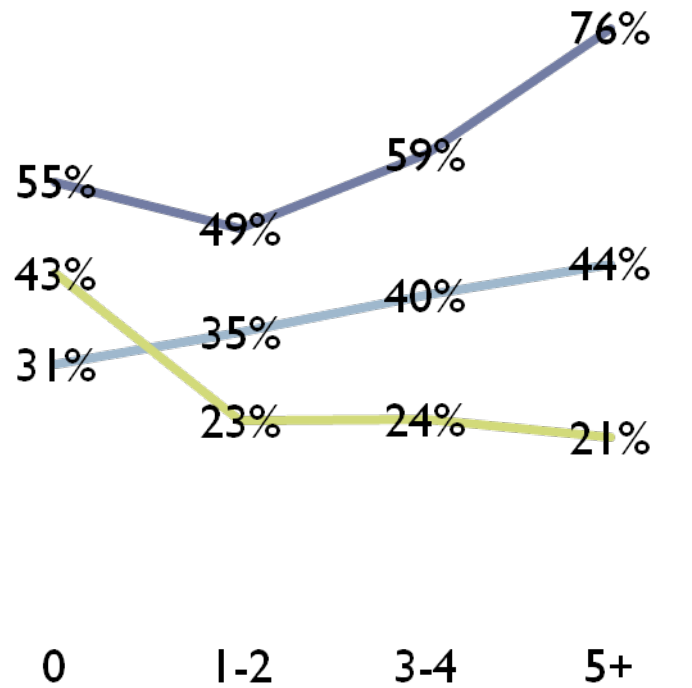


Candidates Recruited by Local Association

- ▶ Tend to be recruited in competitive ridings
- ▶ More likely to live in riding
- ▶ Encouraged by family and friends to run
- ▶ Less likely to reveal careerist, policy-related motivations
- ▶ Active in civil society organizations (both number of memberships and hours spent)



Recruitment, by Number of Civil Society Memberships

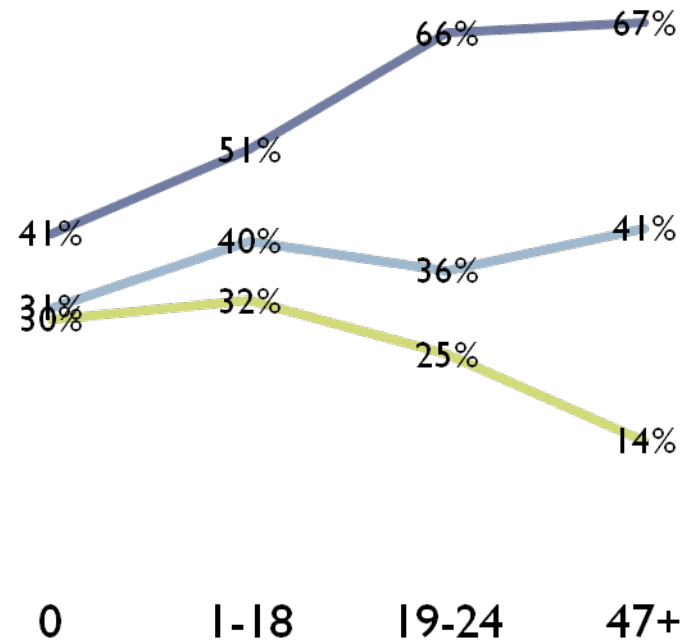


— Approached by Local Association

— Approached by National Party/Branch

— No Party Recruitment

Recruitment, by Hours of Civil Society Association Involvement



— Approached by Local Association

— Approached by National Party/Branch

— No Party Recruitment

Candidates Recruited by National Party/Branches

- ▶ Disproportionately female
- ▶ Less likely to live in riding
- ▶ More likely to have joined party in prior year
- ▶ More likely to expect to lose
- ▶ Involved in civil society organizations



Candidates not recruited by party

- ▶ Disproportionately male
- ▶ Less likely to be encouraged by friends, family
- ▶ More likely to express careerist, policy-related motives for running
- ▶ Less involvement in civil society organizations



Gender & Party Recruitment

	WOMEN	MEN
Recruited by local association	67%	54%
Recruited by national party	47%	31%
No Party recruitment	18%	30%



Ethnicity and Party Recruitment

□	Member of Ethnic association	non-member
Recruited by local association	74%	58%
Recruited by national party	49%	36%
No Party recruitment	11%	27%



Conclusions

- ▶ Candidate recruitment remains a party-dominated function
- ▶ Local parties play key role; national parties a secondary one
- ▶ Distinctive profiles of candidates between 'political entrepreneurs' and those recruited by party

